

# FITC-Compatible Human BCMA/TNFRSF17 Protein

Cat. No. BCM-HM117C

## Description

<b>Source</b>	Recombinant FITC-Compatible Human BCMA/TNFRSF17 Protein is expressed from HEK293 with His tag at the C-Terminus. It contains Met1-Ala54.
<b>Accession</b>	Q02223-1
<b>Molecular Weight</b>	The protein has a predicted MW of 35.9 kDa. Due to glycosylation, the protein migrates to 37-48 kDa based on Bis-Tris PAGE result.
<b>Wavelength</b>	Excitation Wavelength: 490 nm Emission Wavelength: 520 nm
<b>Endotoxin</b>	Less than 1EU per µg by the LAL method.
<b>Purity</b>	> 95% as determined by Bis-Tris PAGE > 95% as determined by HPLC

## Formulation and Storage

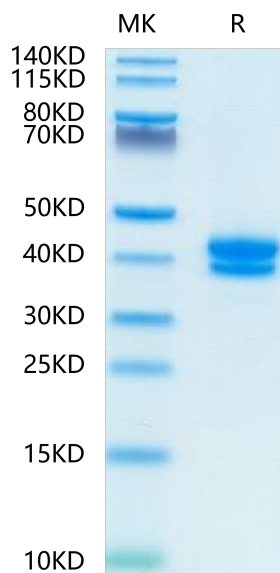
<b>Formulation</b>	Lyophilized from 0.22 µm filtered solution in PBS (pH 7.4). Normally 8% trehalose is added as protectant before lyophilization.
<b>Reconstitution</b>	Centrifuge the tube before opening. Reconstituting to a concentration more than 100 µg/ml is recommended. Dissolve the lyophilized protein in distilled water.
<b>Storage</b>	-20 to -80°C for 12 months as supplied from date of receipt. -80°C for 3 months after reconstitution. Recommend to aliquot the protein into smaller quantities for optimal storage. Please minimize freeze-thaw cycles.

## Background

B-cell maturation antigen (BCMA or BCM), also known as tumor necrosis factor receptor superfamily member 17 (TNFRSF17), is a protein that in humans is encoded by the TNFRSF17 gene. TNFRSF17 is a cell surface receptor of the TNF receptor superfamily which recognizes B-cell activating factor (BAFF).

## Assay Data

### Bis-Tris PAGE



FITC-Compatible Human BCMA on Bis-Tris PAGE under reduced condition. The purity is greater than 95%.

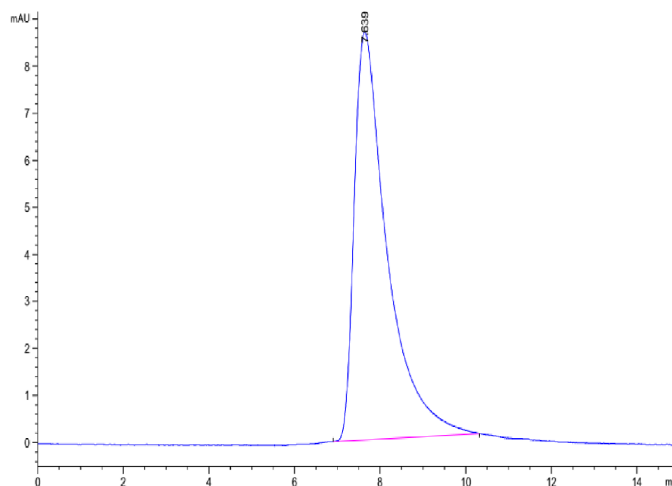
### SEC-HPLC

# FITC-Compatible Human BCMA/TNFRSF17 Protein

Cat. No. BCM-HM117C

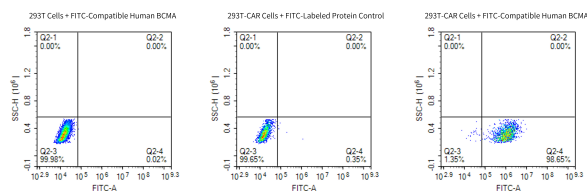


## Assay Data



The purity of FITC-Compatible Human BCMA is greater than 95% as determined by SEC-HPLC.

## FACS Data



Use 100  $\mu$ l FITC-Compatible Human BCMA (1  $\mu$ g/ml) to detect the positive rate of  $1 \times 10^6$  anti-BCMA CAR cells. Non-transfected 293T cells and FITC-Labeled irrelevant protein (100  $\mu$ l, 1  $\mu$ g/ml) were served as negative control.